

REVISIONS

Rev. Note. Date By

NOTES

- All materials subject to technical design detail and planning condition confirmation - images show intent

NON VISIBLE ELEMENTS

- Flat roof areas - Bauder Thermofol PVC light grey or similar, to be confirmed at technical design
- Bin and buggy store doors - Aluminium Anthracite RAL 9016 or similar
- Vents - All vents to match building material/colour immediately adjacent to minimise visibility
- Juliet balcony railings - to match balcony railings in design, style and colour



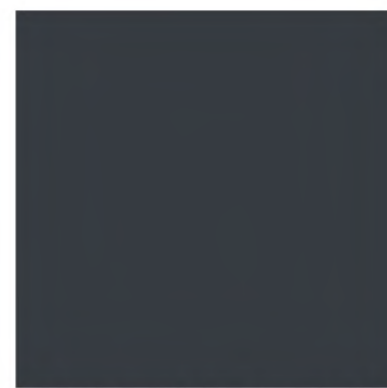
Wienerberger Blended Red Multi Gilt Stock or similar



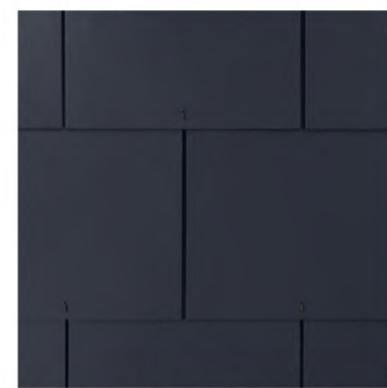
Wienerberger Pagus Grey/Black or similar



White UPVC fascias with black gutters and downpipes



Cladding to projecting balcony structure, Anthracite RAL 9016 or similar



Fibre cement slate tiles, Cedral Thrutone or similar



Slimline UPVC windows and doors, Anthracite RAL 7016 or similar



TYPICAL FRONT ELEVATION



Essex Barn 24, Little Boyton Hall Farm, Boyton Cross, Chelmsford, CM1 4LN. Telephone 01277 355007  
Suite 4, Newmarket House, Fordham Rd, Snailwell, Newmarket, CB8 7NB. Telephone 01638 663838

**McCarthy Stone**  
*Life, well lived*

Project Title  
Retirement Living & Anchor  
Nazareth House, London Road  
Southend-on-Sea

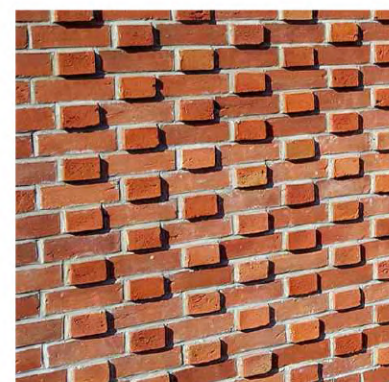
Drawing Title  
Material Elevation

Scale NTS@A2 Date 20.01.2023  
Drawn SGN Checked NT  
Drawing No.  
**LSE-2794-3-AC-4002** -  
Division Project No. Stage Discipline Number Revision

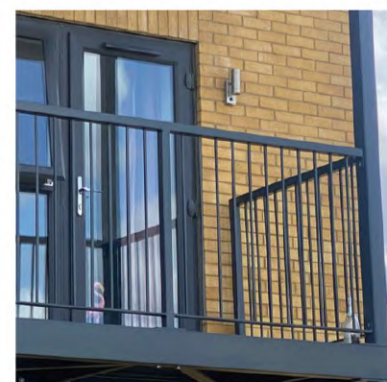
© McCarthy & Stone Retirement Lifestyles Limited  
All rights reserved. The reproduction of all or any part of this drawing/document and/or construction of any building or part of a building or structure to which this drawing/document relates without the written permission of the copyright owner is prohibited.



Full height Aluminium window/door to lounge area, Anthracite RAL 7016 or similar



Projecting header brickwork detail vertically between windows



Powder coated metalwork to balcony railings, Anthracite RAL 9016 or similar



Black metal railings to replace removed brickwork panels in front boundary wall - See street scene drawing for locations